

The Brain

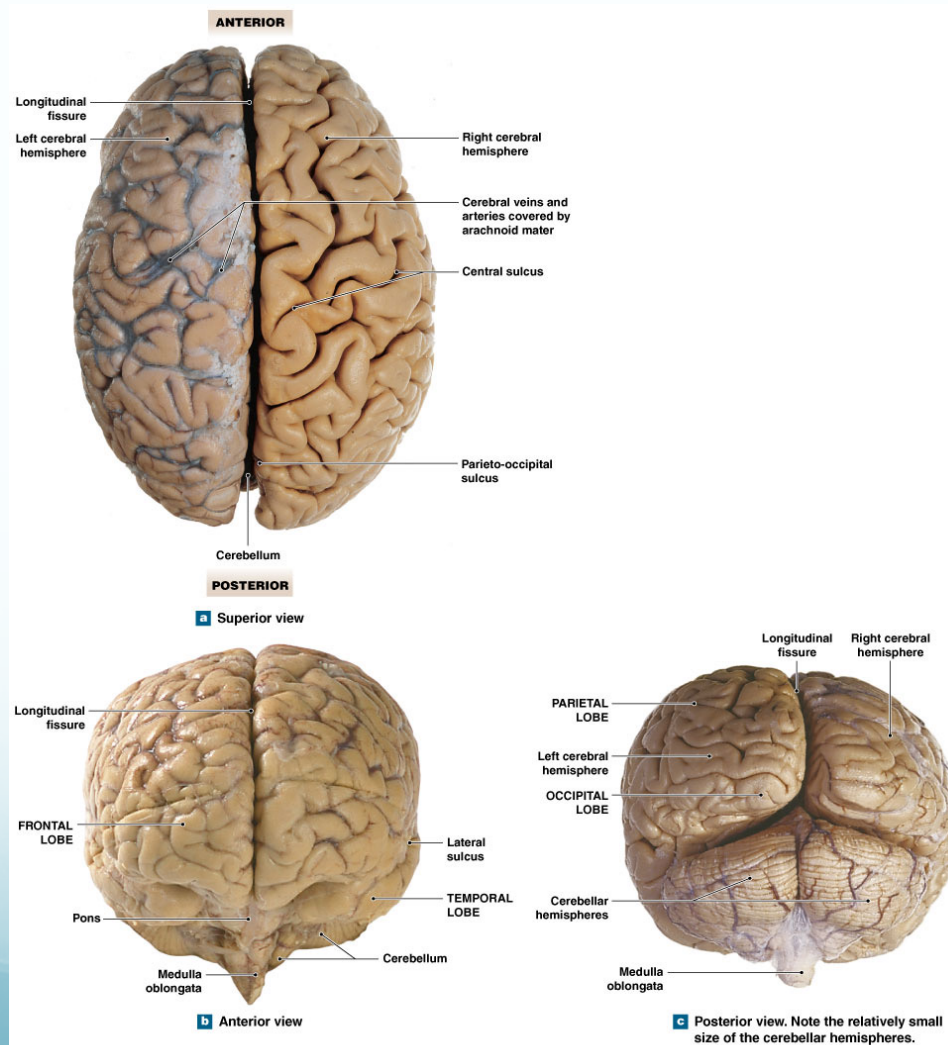
Learning Outcomes:

1. Identify the major regions of the brain and identify their functions
2. Compare and contrast the structures that protect and support the brain
3. Identify the anatomical structures that form the thalamus and hypothalamus and list their functions
4. Identify the components of the cerebellum and list their functions

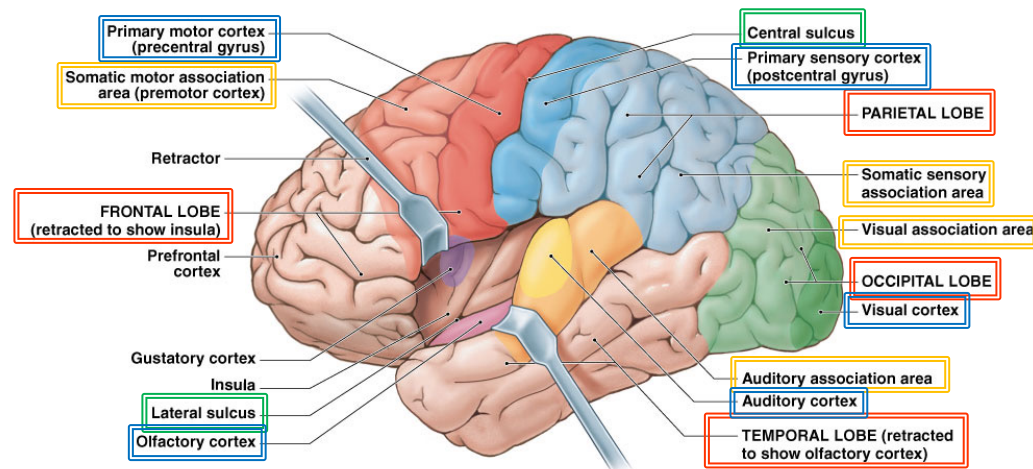
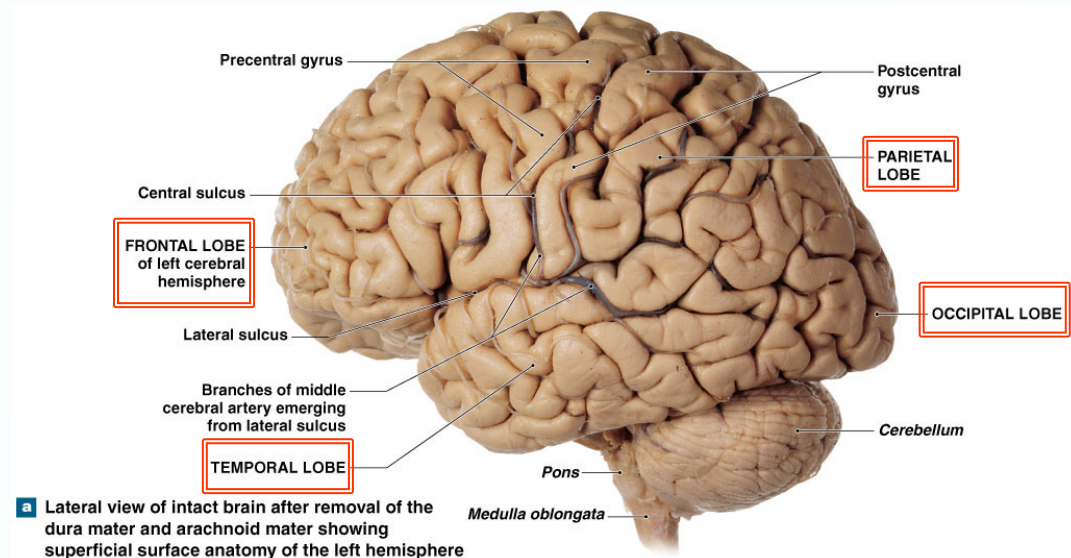
Dr. Lisa Brinn
FIU

Department of Biological Sciences
lbrinn@fiu.edu

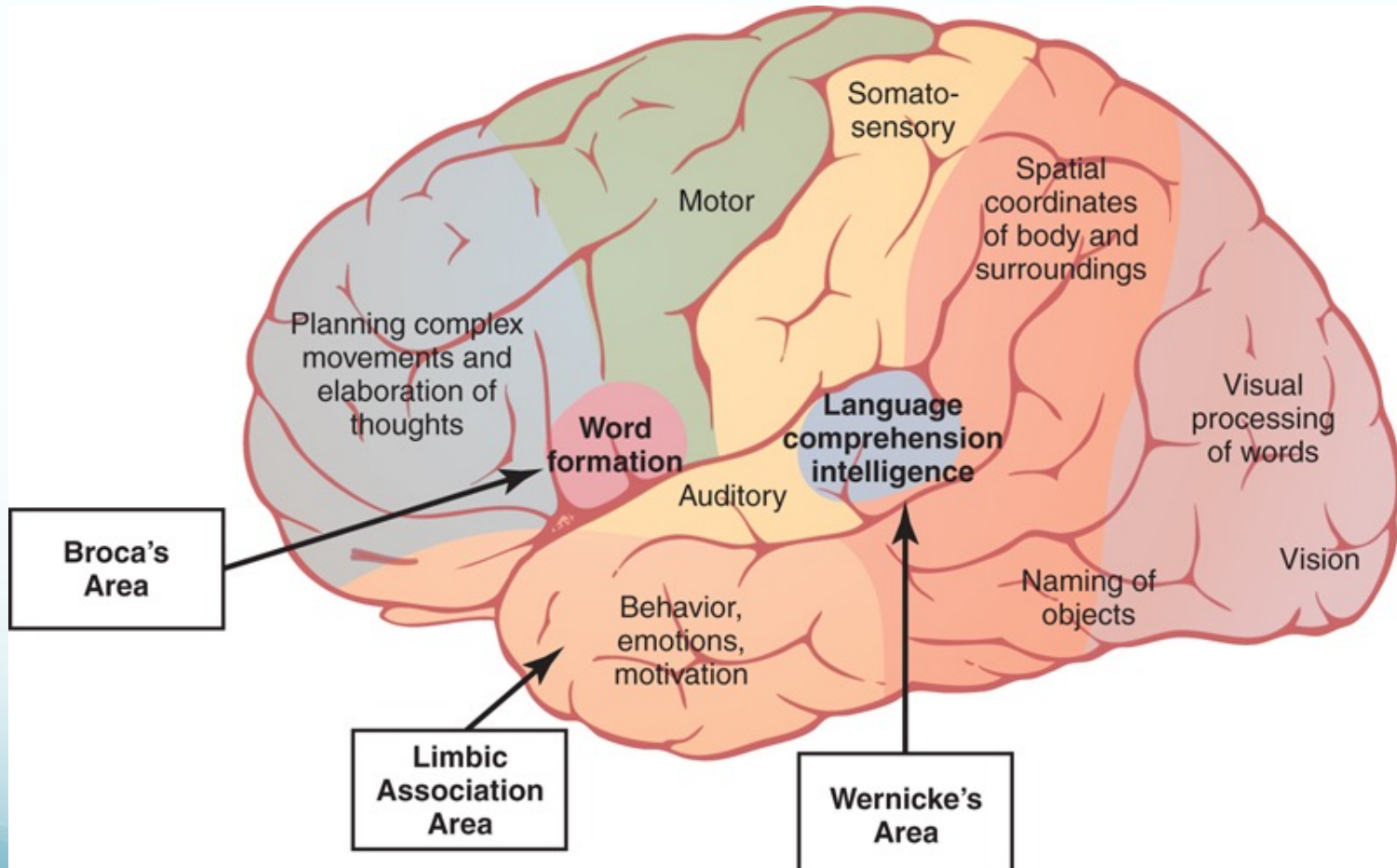
Cerebrum



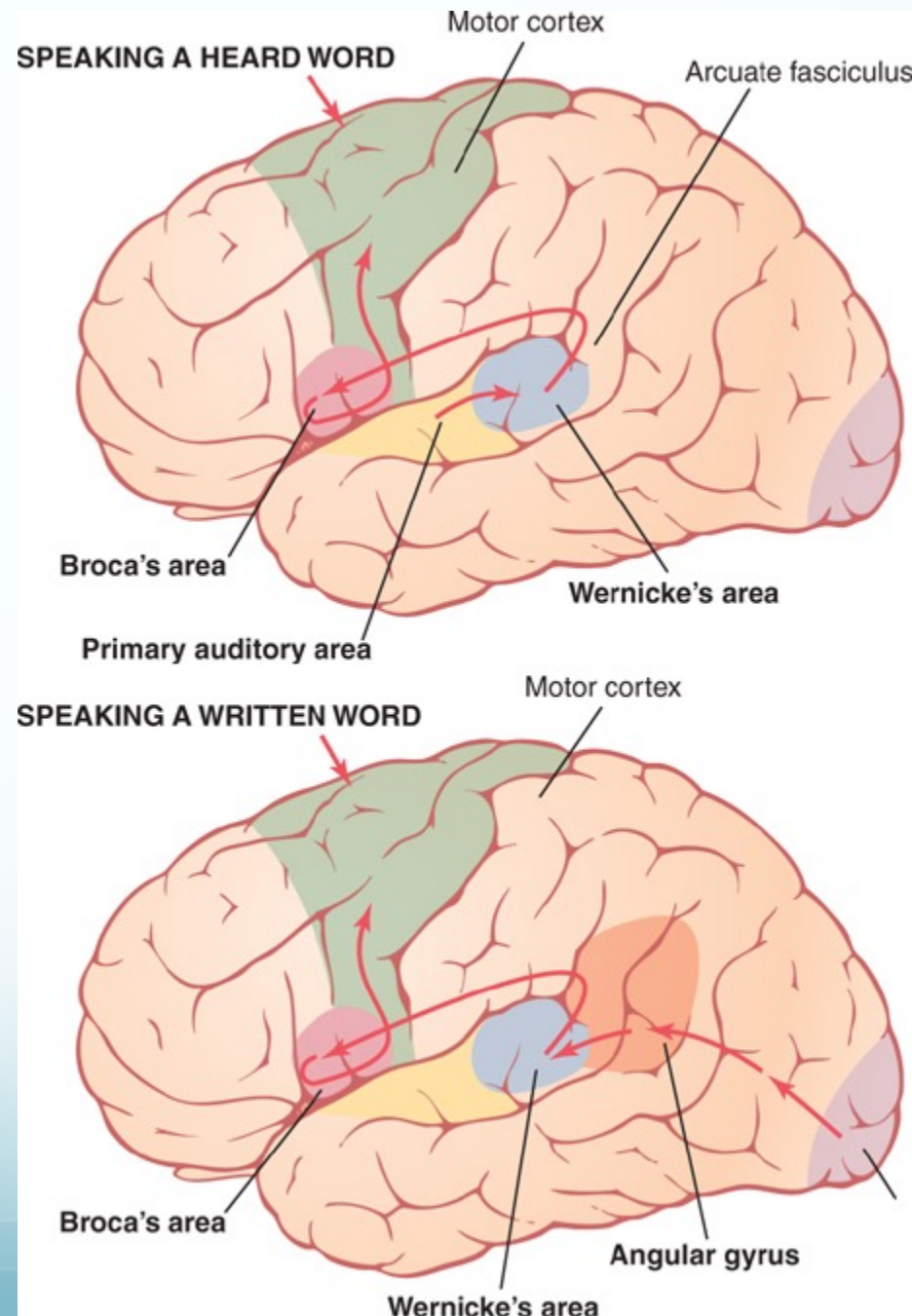
Anatomical Landmarks



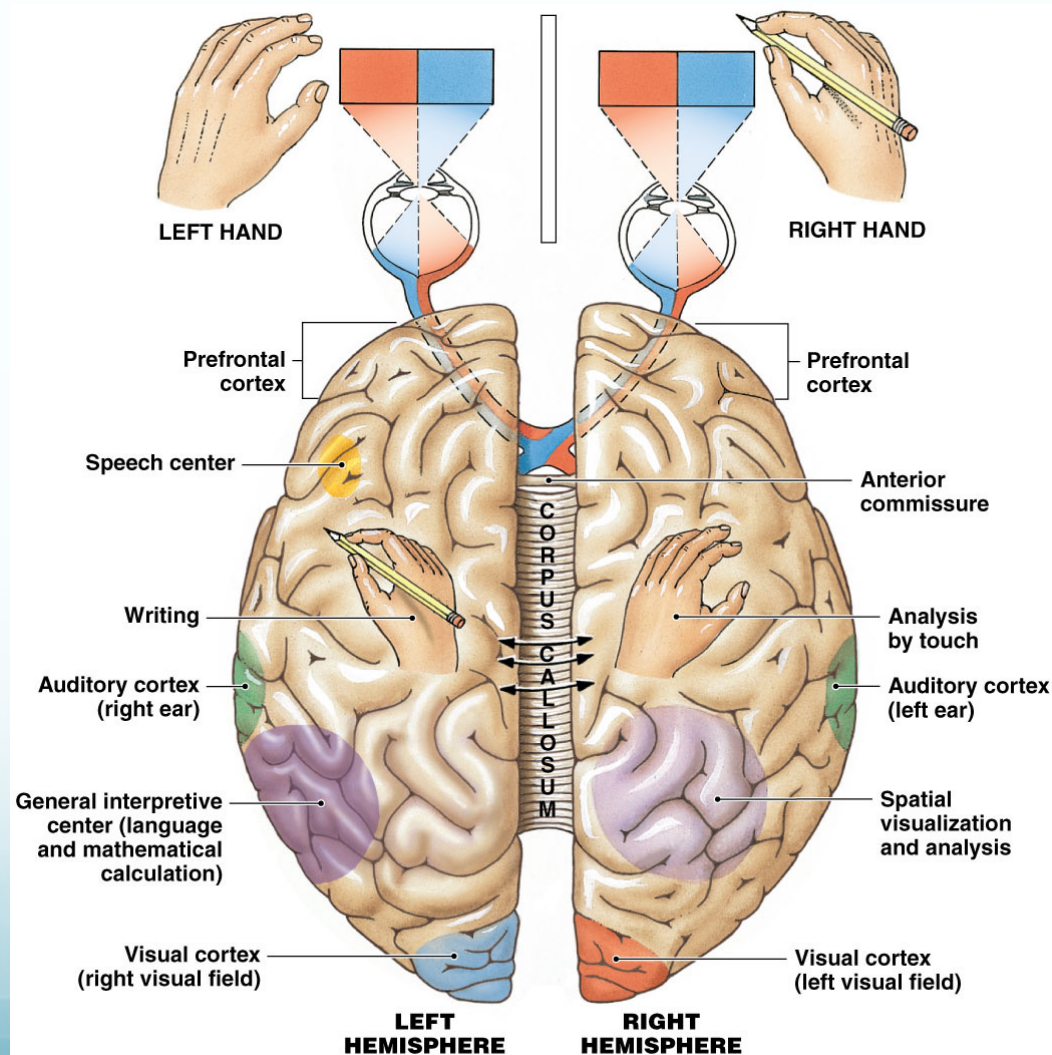
Functions of Specific Cortical Areas



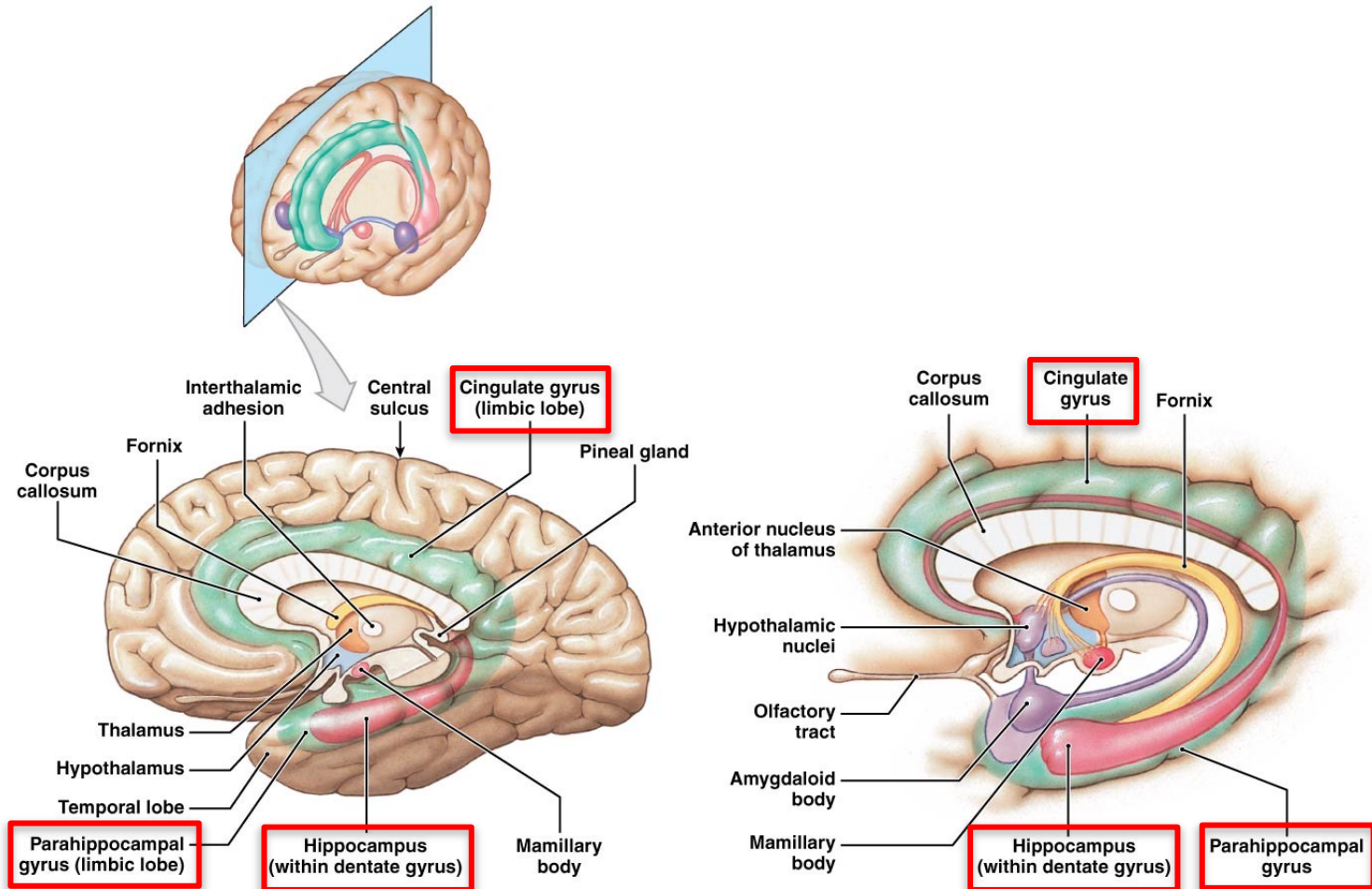
Function in Communication



Hemispheric Specialization



Limbic System



a Sagittal section through the cerebrum showing the cortical areas associated with the limbic system. The parahippocampal and dentate gyri are shown as if transparent so that deeper limbic components can be seen.

b Additional details concerning the three-dimensional structure of the limbic system.